



Berkendael
Schola Europaea • Bruxelles I

NURSARY AND PRIMARY SCHOOL

GENERAL INFORMATION BOOKLET

2019 - 2020

The mission of the European School Brussels I: To provide a quality multilingual and multicultural education in a safe and nurturing learning environment. Based on trust and respect, our school celebrates diversity and recognizes the value of effort, critical thinking and cooperation to achieve excellence.

Orig.: FR.



Dear Parents,

Welcome to the European School Brussels I - Berkendael site.

We look forward to welcoming you and we will do our very best to make your child feel well at school.

In this booklet, you will find useful and important information concerning all aspects of school life. Regular updates and urgent messages from the Management will be sent to you through the School Management System.

The beginning of 2019-2020 school year marks important events such as the opening of new classes. We warmly welcome all new pupils, their families and new colleagues.

We hope that 2019-2020 will be a fruitful year for you and your family and that we will have the opportunity to meet you at the various information meetings and special events held throughout the school year.

Gian Luca LONGO
Deputy Head

SUMMARY

1. SCHOOL CALENDAR 2019-2020.....	4
2. START OF THE SCHOOL YEAR.....	5
3. MEETINGS	6
4. ACCESS TO SCHOOL.....	7
5. SCHOOL TIMETABLE.....	9
6. SCHOOL FEES FOR NURSERY AND PRIMARY	9
7. SCHOOL MATERIAL.....	10
8. EDUCATIONAL EXCURSIONS AND SCHOOL TRIPS.....	11
9. LOST AND FOUND	12
10. PUPILS' BADGES.....	13
11. ABSENCES.....	14
12. PUPILS SUPERVISION.....	14
13. MEDICAL AND PSYCHOLOGICAL SERVICE.....	15
14. EDUCATIONAL SUPPORT.....	16
15. COMMUNICATION BETWEEN ALL INVOLVED IN SCHOOL LIFE.....	17
16. SCHOOL INSURANCE.....	19
17. TRANSPORT	21
18. EUROPEAN COMMISSION AFTER SCHOOL CARE.....	21
19. EXTRACURRICULAR ACTIVITIES.....	22
20. APEEE.....	23
21. VARIOUS.....	23
22. CLASSES AND TEACHERS 2019-2020.....	30
23. CONTACTS.....	31

<http://www.eeb1.com>

The school website includes up to date and detailed information on all aspects of school life. Important messages from the management will also be posted on the site in case of an emergency. Please consult the website on a regular basis.

1. SCHOOL CALENDAR 2019-2020

<p align="center">ECOLE EUROPEENNE DE BRUXELLES I (Site de Berkendael et d'Uccle) EUROPEAN SCHOOL BRUSSELS I (Berkendael and Uccle sites)</p> <p align="center">CALENDRIER APPROUVE DES CONGES SCOLAIRES 2019/2020 APPROVED SCHOOL CALENDAR 2019/2020</p>		
RENTREE DES CLASSES START OF THE SCHOOL YEAR	Mercredi / Wednesday	04/09/2019
TOUSSAINT ALL SAINTS DAY	Du lundi / from Monday Au vendredi / to Friday	<i>Du / From</i> 28/10/2019 <i>Au / To</i> 01/11/2019 inclus/inclusive
NOEL ET NOUVEL AN CHRISTMAS AND NEW YEAR	Du lundi / from Monday Au vendredi / to Friday	<i>Du / From</i> 23/12/2019 <i>Au / To</i> 03/01/2020 inclus/inclusive
CARNAVAL CARNIVAL	Du lundi / from Monday Au vendredi / to Friday	<i>Du / From</i> 24/02/2020 <i>Au / To</i> 28/02/2020 inclus/inclusive
PAQUES EASTER	Du lundi / from Monday Au vendredi / to Friday	<i>Du / From</i> 06/04/2020 <i>Au / To</i> 17/04/2020 inclus/inclusive
FÊTE DU TRAVAIL/LABOUR DAY	Le vendredi / Friday	01/05/2020
ASCENSION ASCENSION	Du lundi / from Monday Au vendredi / to Friday	<i>Du / From</i> 18/05/2020 <i>Au / To</i> 22/05/2020 inclus/inclusive
LUNDI DE PENTECOTE PENTECOST MONDAY	Le lundi / Monday	01/06/2020
FIN DE L'ANNEE SCOLAIRE LAST DAY OF SCHOOL	Vendredi / Friday	03/07/2020

Le calendrier scolaire comporte 181 jours et est harmonisé entre les quatre Ecoles Européennes de Bruxelles.
 This school calendar is made up of 181 days, and standardized across the four Brussels' European schools.

- **Pré-rentrée des professeurs/ Teachers' pre-school orientation** : 2 et 3 septembre 2019 / Sept. 2 and 3 2019
- **04/11/2019 : Journée carnets scolaires maternel et primaire/School reports day for nursery and primary**
 Bilan oral aux parents. Pas de cours pour les élèves du cycle maternel et primaire.
 Oral feedback to parents - no classes for nursery and primary pupils.
- **06/01/2020 : Journée pédagogique – Pedagogical day**
 Pas de cours pour les élèves de maternel, de primaire, ou de secondaire.
 No classes for nursery, primary or secondary school pupils.

2. START OF THE NEW SCHOOL YEAR

Language tests and level evaluations: the families concerned will be contacted individually by the school.

An **information meeting for nursery 1st and 2nd primary parents** , will take place on Tuesday 3rd September 2019 following the schedule below:

14 : 30 – 14 : 45	Information meeting for all nursery, 1st and 2nd primary parents in the gym hall.
14 : 45 – 16 : 00	Meeting with nursery and 1 st and 2 nd primary parents with teachers and assistants in the classrooms.

An **information meeting for 3rd, 4th and 5th primary parents** will take place on Wednesday 4th September 2019 following the schedule below:

13 : 30 – 15 : 00	Meeting with 3 rd , 4 th and 5 th primary parents and teachers in the classrooms.
-------------------	--

Start of classes: Wednesday 4th September 2019.

<i>CLASSES</i>	Place	<i>Start of class only on 04/09/19</i>	<i>End of class 04/09/19</i>
Nursery + 1 st and 2 nd primary	Playground, building A	9 :30	12 :30
3 rd , 4 th primary	Playground, building A	8 :30	12 :30
5 th primary	Playground, building B	8 :30	12 :30

The canteen, school transport and the Garderie of the Commission will be ensured from the first day of school, Sept. 4th.

3. MEETINGS

A series of meetings will be organised following the calendar below with the objective to offer detailed information regarding the progress and development of pupils in school. The presence of the parents during these meetings is mandatory.

Meeting	Date	Details
<i>Early Education meeting (Nursery)</i>	4 th November 2019 <i>The exact time of your appointment will be given by the teacher.</i>	<i>Early Education</i> program provides two parent/teacher meetings. On this occasion, you will meet the teacher of your child to discuss the progress in relation to the various competencies of the Early Education program.
Oral communication Primary school report	* No classes for nursery and primary students that day	The first part of the primary school report consists of an individual meeting between the teacher and the pupil's parents. This meeting will take place on Monday, 4 th November, 2019 and will allow teachers to verbalise the pupil's progress.
<i>Early Education meeting - 2nd meeting</i>	June <i>The exact time of your appointment will be given by the teacher.</i>	

4. ACCESS TO SCHOOL

As a general rule, only staff and suppliers' cars are allowed in the school parking.

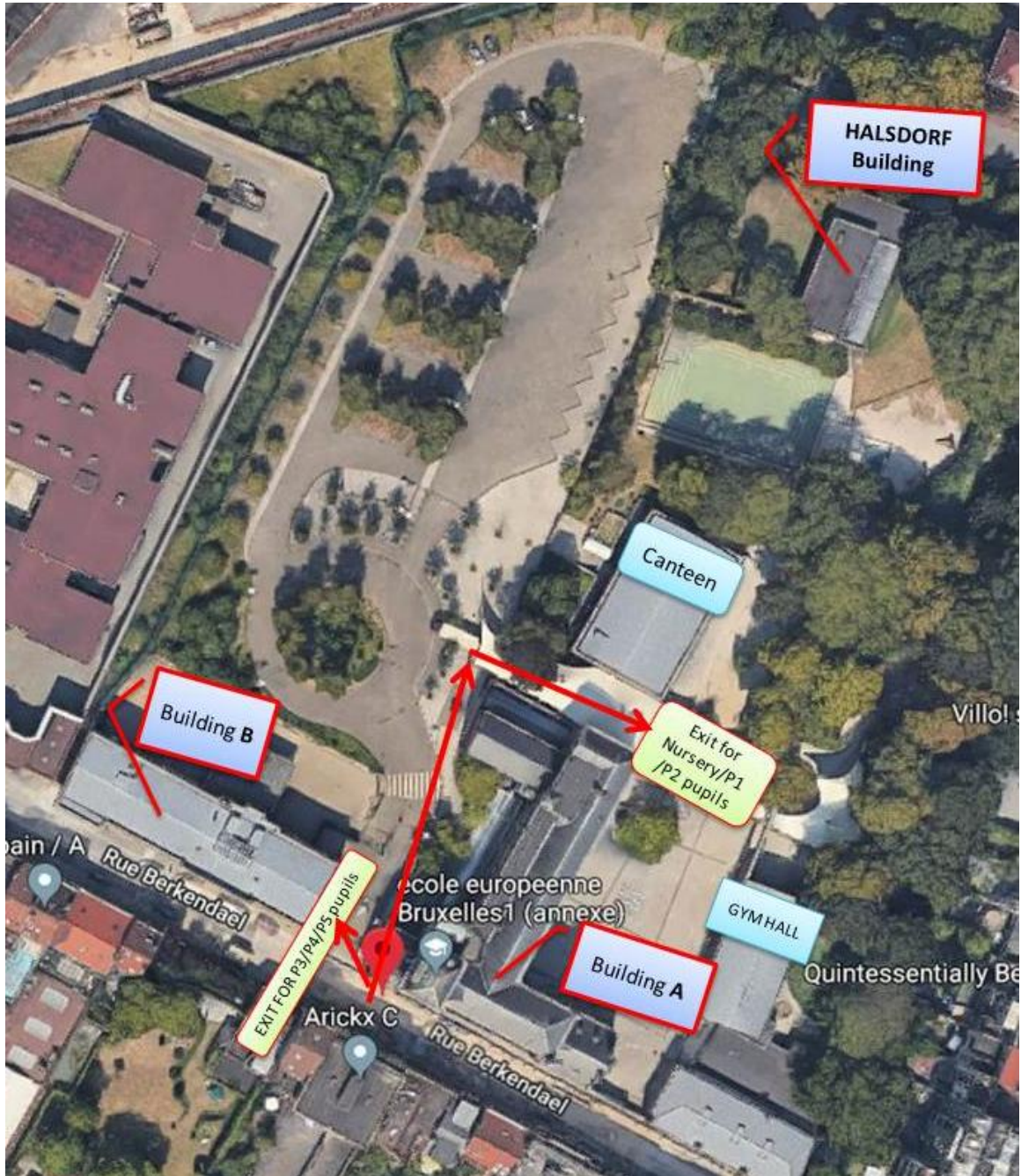
Only parents with an appointment may enter the site during school hours. The member of staff shall send a written invitation, this is to be shown to the security guards when arriving at school. Parents will have to register and will be issued with a visitor's badge which must be worn visibly at all times.

MORNING		
<u>Kiss and Go</u> on foot or by bike		Parents who accompany their children on foot can drop them off at the gate between 7:55 and 8:15. There are bike racks for the pupils.
<u>Kiss and Drive</u> by car	between 7 :55 and 8 :15	For parents who come by car, the school has set up the <i>Kiss and Drive</i> service in front of the main gate, between 7:55 and 8:15 . Your child will be greeted by school staff and then accompanied to the assembly point.
By school bus	at 7 :55	School buses arrive at 7:55 am, pupils are dropped off in the school parking.
END OF THE SCHOOL DAY		
On foot or by bike <i>Nursery, P1 and P2</i>		The parents pick the pupils up in the playground of Building A . The entrance: small gate (Rue de Berkendael 72). Parents must have the school badge with photo to enter the school site.
On foot or by bike P3, P4, P5		Parents wait for the pupils in front of the main door of building B .
By school bus		Pupils will be accompanied to the bus by school staff.
Commission garderie		Pupils will be accompanied to the Commission Garderie in Berkendael by the garderie staff.
Presicolaire After School Activities		Pupils will be accompanied to the Activity assembly point by school staff.

IMPORTANT:

Lessons start at 8.15 am every day. Latecomers could disturb the normal course of the lessons, so please be punctual. The family will be invited to a meeting with the Management if the pupil is often late.

Organisation of the end of the school day



5. SCHOOL TIMETABLE

<i>Berkendael site</i>	NURSERY	PRIMARY
Monday, Tuesday and Thursday	8 :15 – 15 :00	8 :15 – 15 :00
Wednesday	8 :15 – 12 :30	$\frac{1^{st} \text{ and } 2^{nd}}{8:15 - 12:30}$ $\frac{3^{rd}, 4^{th} \text{ and } 5^{th}}{8:15 - 12:45}$
Friday	8 :15 – 12 :30	8:15 – 15:00

Pupils are supervised during breaks as well as 20 minutes before and after the school day.

Thank you for being punctual at the end of the school day. In case of repeated late arrivals, the family will be invited to an appointment with the management.

6. SCHOOL FEES FOR NURSERY AND PRIMARY

	Nursery (€)	Primary (€)
School agenda	4,00	4,00
Photocopies and printing	31,62	31,62
Intermath	-	26,00
School insurance	6,50	6,50
Educational visits	75,00	75,00

The above fees have been approved by the School's Administrative Board. These school fees are compulsory and must be paid by parents of children in Categories I, II and III.

On receipt of the itemised bill, the amount should be settled within 30 days.

Parents are requested to inform the school's Administration in writing of any change regarding their employer or their employment status, to the following e-mail address: lieke.skeet@eursc.eu indicating the exact date of this change.

7. SCHOOL MATERIAL

Agenda/Diary: At the start of the school year, each nursery and primary pupil receives an agenda/diary to note work to be done and items to bring to school, as well as all other useful information. **This agenda is the official means of communication between the school, the teachers and the families.** Please consult it on a daily basis. The school invoices parents for the agenda (see fees above). One single copy shall be provided to each pupil. Parents with shared custody of their child/children are requested to pay particular attention and to ensure that the child shows the agenda to both parents for them both to sign.

Intermath: the booklets are distributed by the teachers. The school invoices parents for Intermath (see fees above). Intermath is a mathematics textbook specially developed for the European Schools and is compulsory.

Sport: A European school sports kit is required only for primary students. It has to be ordered via the following webshop: <https://www.jakosportshop.be/c-4512615/european-school-brussels-i/>

You will find more information on our website: <https://www.eeb1.com/en/uniform-physical-education/>

Book and material list: can be found on the school website (eeb1.com) by section at the following link (<https://www.eeb1.com/cours-2 / list-of-books />).

8. EDUCATIONAL EXCURSIONS AND SCHOOL TRIPS

Excursions: The nursery and primary curriculum attaches great importance to environmental studies and learning by observation and practice. It is with this in mind that educational visits and excursions are organised during the year. This is invoiced directly by the school (see school fees above).

School trips: We have planned school trips (green classes, sea classes, snow classes, second language) that are an integral part of our educational program. Enrolment in the European school implies the acceptance of this educational program. Exemption can only be granted for medical reason and must be requested to the Management and justified with a medical certificate. The Management reserves the right to request a meeting with the parents. In case of financial difficulties, families can contact the administration to ask the school to participate in the expenses of the trip (social fund). The school provides information of all the trips during the Education Council. The prices are fixed on the basis of supply and length of the trip. Parents concerned will receive detailed information by e-mail and through meetings and information evenings organised specifically for this purpose.

SCHOOL TRIPS 2019-2020 - **INDICATIVE PRICES**

P1-P2	Green class	+/- 150€
P3	Sea class	+/- 450€
P4	Snow class	+/- 900€
P5	L2 trip	+/- 680€

9. LOST AND FOUND

Please write the family name on each item so that lost items can be given back to your child. All items found in Berkendael are kept in a special room. The named items are brought back to the classes. At the end of the school year, objects that have not been claimed by the families will be donated to Belgian charities.

10. PUPILS' BADGES

Pupil's parents must ensure that, from the first day of school, a badge is fixed to the lapel of their child's coat. The badge should be filled out as follows:

MODEL

Eva LECLERC – M2 FRa					
Cell phone	0477/32.25.26		0477/25.26.32		
	Mon	Tue	Wed	Thu	Fri
DEPARTURE	75	75	G.Ber	75	G.Ber
MEALS	RC	RC	RC	RC	T
NOTES	Lactose intolerance				

TO BE FILLED OUT BY THE PARENTS

Cell phone					
	Mon	Tue	Wed	Thu	Fri
DEPARTURE					
MEALS					
NOTES					

*** Indications to fill out the badge**

Cell phone	Please add the number of both parents	
DEPART <i>Please, specify where your child goes at the end of the school day.</i>	PB	Parents will pick up their child on the Berkendael site
	Periscolaire	After school activities
	G.BERK	Garderie Berkendael
	G.BU	Garderie Beaulieu
	G.COLE	Garderie Cole
	G.GE	Garderie Genève
	G.PA	Garderie Palmerston
	G.VM	Garderie Van Maerlant
	G.WIL	Garderie Wilson
	N° of the bus	
MEALS <i>Please specify</i>	RC	<i>Repas chaud/ hot meal</i>
	T	<i>Tartine/ packed lunch</i>
NOTES <i>Please note any useful information.</i>	Allergies, medication	
	Au pair contact number	

11. ABSENCES

The reference document concerning absences is the "General Regulations of the European Schools, Art. 28 and 30 - Regular attendance of courses".

1) General Remarks

A pupil's enrolment in nursery or primary implies the obligation to participate in all classes which are part of the curriculum and to do what is requested in terms of work.

Pupils should attend classes regularly and punctually according to the school calendar and the timetable given to them at the beginning of the school year.

2) Justification

In the event that a pupil is prevented from attending school for health reasons, the responsible person (s) of the child informs the school by e-mail (preferably to the main teacher) from the first day.

This communication is essential for effective coordination of attendance monitoring. After more than two consecutive days of absence, **a medical certificate is compulsory.**

3) Authorization of absence for personal convenience

The authorizations of absence must be requested at least 7 calendar days in advance and in writing to the Deputy Director. This kind of request is considered exceptional.

Except in cases of force majeure, permission for absence may not be granted for the week preceding or the week following school holiday periods or public holidays (Art. 30, 3c. iv. of the General Rules).

Please note that absences before and after school holidays can only be justified by certified medical reasons. An ticket or a holiday booked in advance, or the visit to the family in another country do not constitute a sufficient reason to justify the absence.

12. SUPERVISION

Supervision is put in place during playtime and the lunch break.

During long breaks, in addition to free play, students are supervised by staff who organise group activities, such as tournaments or team games.

13. MEDICAL AND PSYCHOLOGICAL SERVICE

SCHOOL INFIRMARY

The school infirmary is intended to provide first aid during accidents or discomfort during school hours.

In case of fever or illness, parents are asked to pick up their child at school. If the condition of the child requires it, the nurse can call an ambulance for urgent medical help.

If treatment is to be given to your child, please note that we require a medical prescription (with full dosage), treatment and written agreement from parents, and all must be dated and signed.

Medical visits

In accordance with school medical procedure, children in the following year levels will receive a medical examination during the school year:

- The first primary (P1)
- Second nursery (M2) (Only neuro motor test)
- The third primary (P3)
- The fifth primary (P5)

The purpose of these examinations is to check the overall health and maturity of the pupil, inform parents, and, if necessary, offer help to aid in adapting to school and family life.

The medical service has an exclusively preventive function; early detection of physical deficiencies and optimisation of living conditions (school buildings). The school doctor does not have to examine a feverish or injured child.

For obvious security reasons, parents of new students are asked to return the duly completed medical questionnaire (<http://www.eeb1.com>) before their child's first day of school. Thank you!

In order to ensure optimal public health, any change in the child's health (infectious disease for example) must be communicated to the medical service.

For further information, please visit our website: <http://www.eeb1.com/service-medical-2/>

SCHOOL PSYCHOLOGIST

The school has a part-time psychologist, Mrs Julia LEMBERGER. Her work focuses on supporting students, families, and teachers in dealing with students' academic, emotional, and behavioral challenges. She also assists when necessary within the Educational Support Policy and provides support and analysis to teachers in specific situations.

The school psychologist also provides a link between the school and external experts (therapists, hospital team, psychiatrists ...). She does not do "psychological evaluations" however she does provide contact details to parents of centers that can carry out psychological evaluations in different European languages. Finally, Ms. LEMBERGER does not offer psychological counseling or psychotherapy in school.

Mrs Julia LEMBERGER
julia.lemberger@eursc.eu

14. EDUCATIONAL SUPPORT

The Educational Support Coordination in Berkendael is ensured by Mrs. Laura DE GREEF (laura.de-greef@edu.eursc.eu).

Where class differentiation is not sufficient, the school provides the following educational support structures: General Support, Moderate Support, Intensive Support (type A and B).

- ❖ General support. Any pupil may experience difficulties in a particular aspect of a subject or who may need to 'catch up' because he arrived later in the system of the European Schools, or having been sick or not studying in his mother tongue or dominant. Pupils may also need additional help with acquiring effective learning strategies or study skills.
- ❖ Moderate Support is an extension of General Support. This could be suitable for pupils experiencing considerable difficulties in following the curriculum due to, for example, language issues, concentration problems, etc. It is organised for a longer period than General Support.
- ❖ Intensive support Type A is provided to respond to an expert's assessment of the student's needs and to the signing of an agreement between the principal and the parents. Intensive support A is provided to pupils with specific learning needs, whether in terms of learning, emotional, behavioral or physical.
- ❖ Intensive Support Type B : Management may decide to provide intensive support to a student or group of students who do not have a specific educational need diagnosed, for example in the form of intensive language support for a student or to a group of students unable to follow the normal school curriculum.

The reference documents (2012-05-D-14-en-7 and 2012-05-D-15-en-8) can be consulted on the website of the European Schools (www.eursc.eu).

Mme Laura DE GREEF
laura.de-greef@edu.eursc.eu

15. COMMUNICATION BETWEEN THE DIFFERENT PEOPLE INVOLVED IN SCHOOL LIFE

The majority of the problems are solved by talking, explaining, good sense and professionalism of all concerned.

Communication between school and families

Role of students:

- Do homework
- Being active during classes
- Give back the homework
- Contact the teacher in case of problem / question
- Show tests to parents
- Arrive on time in the morning
- Respect the rules

Role of parents:

- Follow the homework of the student
 - Sign the tests (if requested)
 - Contact the school if you have questions or problems
 - Send an email to the person concerned to ask for an appointment
 - Meet with teachers to discuss
 - Accompany the child on time in the morning and pick him up without delay at the end of the school day
- Please, respect the teachers' working hours.*

Role of Management:

- Inform parents through school notebooks
- Organise parent/teacher meetings
- Send communications via the *SMS my School system*

Role of teachers:

- If there is a question / issue: discuss it with the pupil and if there is no improvement: inform the parents if the a pupil does not work to his full potential - either by e-mail, via the diary or by organizing a meeting;
- Inform the management
- Share pupil's results
- Inform about missing/unfinished homework

If needed:

- The first step is to contact the person/s concerned. It is important that clear, transparent and frequent communication is established between the family and teacher/s in the first place. Management can only intervene if these conditions are met.
- If the problem persists, a meeting may be organised between the Deputy Director and the persons concerned, to which a support person may also be invited.
- The next stage is a follow-up meeting between the Deputy Director and the people involved.
- In cases where the situation is still not resolved, the school Director (Uccle) may then be called upon to intervene.
- Communications with Management go through the Secretariat and not directly through the Director / Deputy Director's e-mail.

Reception hours Teachers'

All our teachers have a reception hour which will be communicated to the parents during the meeting in September. The meeting request is done via the agenda of the child or by email.

IMPORTANT:

Any change in the family status, address or occupation must be reported to the school so that the school can communicate properly and, if necessary, take its own administrative measures.

16. SCHOOL INSURANCE

Mr. Mark Russell is available for all matters related to school insurance, by e-mail: mark.russell@eursc.eu or by phone: 02 / 373.86.03, Mondays, Tuesdays, and Thursdays from 8.30- 14.30 and on Fridays from 8.30-12.45.

Reminder of the provisions of Article 33 of the General Regulations of the European Schools concerning school insurance:

«The school shall take out collective individual insurance, which shall cover, in particular, the financial consequences of the civil liability of the pupil's legal representatives in all cases where the pupil would be called into question as a result of an accident caused By the pupil to other pupils, to a staff member or to third parties.

This insurance also guarantees to accident victims or their dependents the reimbursement of expenses (treatment, hospitalization, etc.) resulting from accidents and the payment of compensation under the conditions specified by the insurance policy which can be consulted at the school's secretariat.

In return for the guarantees mentioned above, the legal representatives of the pupil pay 85% of the amount of the premium fixed by the insurance policy.

The insurance referred to in this Article covers only the risks of personal injury occurring within the school, on the way from the home to the school and vice versa, and during a trip organized by the school 'school.

Property damage and damage occurring outside the school grounds are the responsibility of the legal representatives of the pupils. "

Reminder of the provisions of Article 34 of the General Regulations of the European Schools concerning school insurance:

"The school is not responsible for the objects brought by the pupils in its premises".

Please note that even if a parking space is provided for bicycles, scooters and motorcycles, they are left at the owner's own risk.

Under certain conditions, the Insurance Ethias will reimburse the damages to the students' glasses, worn at the time of the accident, up to a sum of 25 € for the frame, the glasses being reimbursed in full. The share of premiums paid by families is € 6.50 per year and per child enrolled in the school. It is to be paid to the school.

When a school accident occurs, parents must make photocopies of all expense claims related to the accident. These photocopies must be added to the account of

their sickness fund or their mutual to obtain the reimbursement that is still their responsibility.

Extract from school insurance:

- 1. The children enrolled at the school are covered, according to the conditions of the policy, for their bodily accidents and civil liability (damage caused to a third party) throughout school or extracurricular life. For accidents that occur on the way to school (even without supervision) the contract covers only bodily accidents. Liability is therefore not covered.*
- 2. Children who arrive earlier / too late in school are also guaranteed.*
- 3. Children who leave school in the afternoon after school hours to return later to take the school bus are not covered by school insurance outside the school.*
- 4. Children who leave school at noon to go to a place other than the home are not covered by school insurance.*

17. TRANSPORT

****Please note that the European School is not directly responsible for the organisation of school transport. This service is guaranteed by the Parents' Association.***

Bus timetables, bus routes and other useful information may be obtained on the website of APEEE Services (www.uccleparents.org) under the heading "Transport".

<p style="text-align: center;">APEEE Services – TRANSPORT 02 340 14 85 transport.berkendael@uccleparents.org <i>Opening hours:</i> Monday, Tuesday, Thursday, Friday from 8:15 to 8:45 and from 14:15 to 15:30 Wednesday from 10:45 to 12:15</p>

18. EUROPEAN COMMISSION GARDERIE

**** Please note that the European School is not responsible for providing information about Garderie and extracurricular services.***

The European Commission organises a private after school garderie for the children of European Union officials (between 4 and 12 years of age) at Beaulieu, Cole, Genève, Van Maerlant, Palmerston, Wilson and on the school's Uccle and Berkendael sites. The garderie, which also welcomes children of non-entitled parents, subject to availability, is open every day from the end of school until 6.45 p.m. from Monday to Thursday (6.00 p.m. on Fridays), as well as during most working days when the school is closed for holidays: All Saints, Christmas/New Year, Carnival, Ascension, Pentecost, teacher training days and school report days.

Enrolment garderies postcolaires :

02/295.09.45,

OIB-INSCRIPTIONS-GARDERIES-POSTSCOLAIRES@ec.europa.eu

WEBSITE:

For the staff of the Commission:

<https://myintracomm.ec.europa.eu/staff/FR/family/children/afterschool-centre/brussels/Pages/index.aspx?ln=fr>

For other institutions:

<http://myintracomm.ec.europa.eu>

<p style="text-align: center;">EUROPEAN COMMISSION GARDERIE 02/297.91.59 OIB-GARDERIES-SECRETARIAT@ec.europa.eu</p>
--

19. EXTRACURRICULAR ACTIVITIES

****Please note that the European School is not directly responsible for the organisation of extracurricular activities. This service is guaranteed by the Parents' Association.***

The extracurricular program in Berkendael

On all days except Wednesday, our children have the opportunity to practice capoeira, learn to play the piano or guitar, immerse in yet another language or build strength and team spirit in the various sports classes.

The program also includes info sessions with parents and teachers on the after-school activities, fundraising campaigns, as well as an annual school party – all intended to boost its visibility and budget.

The feedback from the participating children and parents has been overwhelmingly positive. The program's success is due to a strong collaboration among a team of volunteer parents, an on-site Coordinator, school staff and instructors. The positive reactions, as well as the planned growth of the school in the next school year, have prompted the expansion of the program. New classes – languages, sports and mind-boosting activities – are on offer for the new school year. Another bus after the end of extracurricular activities on Tuesdays, and after-school childcare are additional services of the program, designed to cater for the needs of as many parents and children as possible.

In order to be able to register for afterschool activities, the APEEE Brussels I annual membership fee must be paid. Registration is done through the following link: <https://services.uccleparents.org/en>

Website: <http://www.uccleparents.org/berkendael/periscolaire-programme/>

Extracurricular activities (Berkendael)
periscolaire.berkendael@gmail.com
+32 472 07 35 25

20. APEEE

APEEE (Parents of Pupils Association of the European School Brussels I):
For the representation of parents and educational questions.

Website: <http://www.uccleparents.org/?q=en>

APEEE Services: The transport services and extra curriculum activities are managed exclusively and wholly by the ‘Services’ section (APEEE-Services) of the Association of Parents of Pupils of the European School Brussels I.

APEEE and APEEE-Services				
Function	Name	Tel .	E-mail	Building
APEEE-Services coordinator	Mrs Pascale DE SMEDT	02 373 86 52	coordination@apeee-bxl1-services.be	Uccle Site (Pré-Vert)
APEEE	Secretariat	02 375 68 38	info@uccleparents.org	Uccle Site (Pré-Vert)

21. VARIOUS

School party:

In cooperation with the Parents’ Associations, the school organizes a party yearly for all to enjoy. Various cultural, social and sports activities are organized as well as stands with national specialties. The date is decided by the Organizing Committee and communicated to the parents. The event is usually held in the spring.

Class representatives and APEEE Parents’ Association

At the beginning of the school year, each class elects two representatives who represents and voices the needs of his/her class to the class teacher and management. Another important role of the representative is to share information with all parents of decision made during official meetings such as the Education Council.

The Parents’ Association represents all parents, actively participates in school life and voices positions which concern the whole school, its buildings and school life.

Parents collaboration

On top of official meetings, parents are asked to collaborate on various occasions, for example during excursions, for small celebrations or classroom projects, for the library and cultural visits.

Teachers also rely on the willingness of parents to ensure well-being in the classroom.

Library

The school library has books in numerous languages. The class teachers in collaboration with the librarian will inform parents about the foreseen arrangements.

LIBRARIAN

Mrs Sylviane SIAR-TITECA
sylviane.siar-titeca@edu.eursec.eu

COUNCILS:

- Canteen committee: this council brings together parents' representatives, teachers and school administration. The essential mission of this committee is to represent the interests of the various users with the service provider in charge of the catering service. Meetings are held at least twice a year and whenever the need arises.
- Pupils' Committee: This committee represents the interests of students. Two representatives per class (as of 3rd year primary) will be invited by the Management to biannual meetings. The purpose of these meetings is to discuss the pupils' with regard to the organization of school life.
- School Party Committee: this committee is organised by the APEEE. Its members are appointed by the Parents Association. One or two members of this committee will represent the school and will contribute to the organisation of the event and ensure a liaison with the management and colleagues. Following Management's approval concerning feasibility, the meetings are organised by the APEEE.
- Education Council (CE): (*General Rules of the European Schools: <https://www.eursec.eu/BasicTexts/2014-03-D-14-en-7.pdf>*). Each school forms two Education Councils, one for the primary and nursery cycle, the other for the secondary cycle.

Each of the Education Councils shall meet 4 times per year.

The task of the Education Councils:

- ✓ To seek optimum conditions for effective teaching
- ✓ To promote positive and stimulating human relations
- ✓ To introduce all measures likely to highlight the school's European character.

Composition:

The Education Council (EC) for the nursery and primary cycles shall be composed of the Director and Deputy Director, of elected representatives of the teaching staff and of elected representatives of the Parents' Association, in principle one per language section or a representation nominated by the APEEE. EC members are fixed. The APEEE is required to communicate the list of representatives of this council at the beginning of the school year.

The Director may invite other persons whose presence he deems useful. Minutes are made of each Education Council in turn; These minutes shall be approved by the Director and will then be submitted to the Council for approval at the next meeting.

Physical Education: Lessons are taught by specialized teachers assisted by the class teacher.

Swimming lessons

Swimming lessons are foreseen for primary and are taught by a swimming instructor with a national patent. The school swimming cap is compulsory. Classes are run following a rotation to ensure a fair amount of classes for each group. The weeks swimming lessons take place, gym classes will not. Exemption from swimming lessons is only permitted with a medical certificate.

Homework

Homework can take different forms. The abilities of children and their level of learning must be taken into consideration. Teachers will determine appropriate homework for each pupil.

4th and 5th year Primary represents a fundamental stage in the learning process with the knowledge requirements in view of progression to secondary cycle, consequently homework can become more regular and targeted.

It must be emphasized, however, that each section or class has its characteristics and peculiarities which distinguish them from others and are part of the educational tradition of the different countries. It is, therefore, impossible to determine a common rule with regards to homework to all classes and all language sections.

Work done at home may not be graded as it is not always the result of individual research as educational opportunities differ from one family to another. For further information, please refer to the class teacher.

Religion and ethics classes

All pupils of the European Schools are required to attend religion or ethics lessons organised by the school.

In our school, the options for religious instruction are:

CATHOLIC PROTESTANT ORTHODOX

Other options may be available if the number of pupils is sufficient and in accordance with the rules for group formation provided in the General Regulations of the European Schools.

If these options are not available for the language section or for a group of pupils, they could also be offered in the pupil's language of instruction from level P3. Any request for a change of religious or ethics course must be motivated and sent to the Management before May 30th and will take effect for the following school year.

Please note that religion teachers are not recruited by the school administration but appointed by the religious authorities.

Assignment of pupils in classes and formation of groups in the primary cycle

General rules for class formation

Pupils are assigned to classes according to the parameters below: :

- ✓ Maximum 30 pupils per class.
- ✓ In case of two merged levels of the same language section, maximum of 25 pupils; up to 20 students if three levels are merged. If possible, we avoid merging à second and third year Primary.
- ✓ Equal distribution of girls and boys.
- ✓ Equal distribution of children with special needs.
- ✓ Case by case analysis if needed

Formation of L2 groups and European Hours:

- ✓ Maximum 25 pupils per group.
- ✓ Equal distribution, as far as possible, of pupils of different sections / languages.
- ✓ Equal distribution of girls and boys.
- ✓ Equal distribution of children with special needs.

Formation of groups for religion and ethics:

- ✓ Assignment of students to existing groups of religion and ethics of their language section to a maximum of 27 students.
- ✓ In the case of a split course, even distribution of girls and boys as well as children with special needs.
- ✓ If the number of pupils of two or three combined groups is less than 27, only one group will be created.
- ✓ Derogations from the rules above is possible in accordance with the Rules of the European Schools.

Rotation of class compositions in case of multiple classes in the same level and language section

The Brussels I - Berkendael site school, is strongly engaged in studying all the pedagogical forms likely to generate a qualitative improvement of its own educational and foundational approach. Among the recommendations of the Pedagogical Council and in accordance with the scientific achievements in this field, one of the aspects to be privileged concerns the differentiation in all its aspects. Our school's teaching team is constantly thinking about how to put the differentiation of groups and classes into practice in order to improve quality. One of the effective measures would be to mix and reestablish the classes in the sections with multiple classes for each level (FR section for the moment).

Vast pedagogical literature testifies the benefits of this educational and organizational measure:

- More balanced and homogeneous classes in order to avoid too pronounced differences within the same class (too many girls or boys, excessive presence of non-native speakers, etc.).

- Relational dimension: to favour mutual knowledge between pupils of different and parallel classes, but also to give others chances in case of "difficult" classes to be managed from a disciplinary point of view.
- More opportunities for pupils to create inner dynamics within groups based on differences and understanding.
- Opportunities for teachers to adapt their teaching styles, and for students to benefit from a wider variety of teaching.
- Reduce the gap between students and promote a culture of mutual exchange and mutual support.

Pupils in all parallel classes of the same language section will be redistributed at the end of nursery and at the beginning of P₃ or P₄ according to the following guidelines:

At the end of the P₂ and P₄, if necessary:

1. P₁ group: Nursery teachers and P₁ teachers play a fundamental role in assigning pupils from different M₂ classes of the same language section.
2. Reformulation and reconstitution of groups - class at the end of P₂ for future P₃: important role of P₂ and P₃ teachers, and all teachers in the section concerned.
3. The final decision is made by the Management, which provides the appropriate provisions for the creation of new groups.
4. In case of particular needs or situations, the Management reserves the right to redistribute regardless of the year and level (from P₁ to P₄).
5. At any time of the year in case of class creation.

Second language (L2)

The choice of the second language is the prerogative of the parents. Once chosen, the L₂ cannot be changed. It is therefore important that families think seriously about this choice, which will be irreversible until the Baccalaureate.

Please, refer to document : Réf: 2011-01-D-33-fr-9 (www.eursec.eu)

Organisation of second language - L₂ lessons

	Monday	Tuesday	Wednesday	Thursday	Friday
P ₁	9 :45 - 10 :15				
P ₂	10 :45 - 11 :15				
P ₃	11 :30 - 12 :15				
P ₄	no L ₂ lessons	8 :15 - 9 :45	9 :00 - 9 :45		
P ₅	8 :15 - 9 :45	no L ₂ lessons	8:15 - 9:00		

P₄-P₅ : The new second language schedule gives the pupils the opportunity to have more time to become familiar with L₂ and to better prepare for L₂ in secondary school. More information about L₂: <https://www.eursec.eu/Syllabuses/2012-08-D-13-fr-2.pdf> .

European hours

It is a subject related to the curriculum, non-disciplinary, which constitutes one of the foundations of the European Schools. European Hours takes place through an open and wide set of activities with multidisciplinary content. It also offers the possibility to mix and group students of different nationalities and mother tongues.

One of the purposes of European hours is for students to interact, work together and communicate during activities. It is not a language course, but an educational and specific moment during which students are called to play, to get to know each other, to share and value their own culture and that of others, by learning and respecting the "Common House Europe" and its transnational dimension. These courses are taught from third year primary.

THE KIVA PROJECT

KiVa



Welcome to KiVa school!

KiVa is an innovative school-based antibullying program which has been developed using cutting-edge research on bullying and its mechanisms.

Prevention, intervention, and monitoring

KiVa is an evidence-based program to prevent bullying and to tackle the cases of bullying effectively. The former is crucial but also the latter is important, as no prevention efforts will make bullying disappear once and for all; there need to be tools to be utilized when a case of bullying comes to light. The third aspect of KiVa is constant monitoring of the situation in one's school and the changes taking place over time; this is enabled by the online tools included in KiVa. These tools produce annual feedback for each school about their implementation of the program as well as the outcomes obtained.

The main components of KiVa

KiVa includes both universal and indicated actions. The universal actions, such as the KiVa curriculum (student lessons and online games), are directed at all students and focus mainly on preventing bullying. The indicated actions are to be used when a bullying case has emerged. They are targeted specifically to the children and adolescents who have been involved in bullying as perpetrators or victims, as well as to several classmates who are challenged to support the victim; the aim is to put an end to bullying.

Measures in individual cases of bullying

The KiVa program does not solely concentrate on preventing bullying, but also addresses individual bullying cases as effectively as possible. Each school implementing the program has a task force – the KiVa team- consisting of at least three teachers or other adults. In their training team members are familiarized with measures to address individual bullying cases. They function as experts on bullying related matters in their school.

Material for teachers, students and parents

KiVa includes an extensive amount of material for teachers, students and parents including e.g. teachers' manuals, videos, online games, KiVa student and staff surveys, posters, vests and parent's guide. KiVa has several language versions available and more translations are underway. Contact us to find out if KiVa exists in your language.

KiVa is not meant to be a one-year project, but a permanent part of the school's antibullying work.

For more information, please visit the KiVa website, <http://www.kivaprogram.net/>

For the parents' guide visit <http://www.kivaprogram.net/parents/>

22. CLASSES AND TEACHERS 2019-2020

NURSERY												
Class	DE	EL	EN	ES	FR a	FR b	FR c	FR d	FR e	IT	LV	SK
TEACHER	Mrs Jasmin HOGAN/ Mrs Yvonne KAISER	Mrs Dimitra ARAMPATZI	Mrs Madison HUDSON	Mrs Irène CABRE CHACON	Mrs Michèle HUCKER	Mrs Elisabeth BUÉE	Mrs Cathérine JEGO	Mr. Christophe HODIERNE	Mr. Mathieu GIROT	Mrs Giulia GUERRERA	Mrs Inguna LANGE	Mrs Tatiana GALAMBOŠOVÁ

PRIMARY										
	DE	EL	EN	FR a	FR b	FR c	IT	LV	SK	
P1	Mrs Samira SCHOLVEN	New seconded teacher	Mrs HAYWARD Sarah	Mrs Sonja GIRARDIN (PADULA)	Mrs Émilie CASSARD	Mrs Marie PETERS	New seconded teacher	Mrs Jana SAUDVIDE DELORME	Mrs Ingrid BENACKOVÁ	
P2	Mrs Alexandra EHRENHAUSER			Mrs Gaëtane WILLOCKX	Mrs Rosa ZOLLO	Mrs DUPHENIEUX Estelle				
P3	Mrs Katharina WOSTMANN			Mrs Anne JOLY	Mrs Marie MARC	Mrs Hanh-Nhi VU DUC		Mrs Brigita SPALINA		
P4	Mrs Mirjam POUGIN			Mrs Amélie BOSSY	Mr. Jimmy STAS	Mrs Sylvie JULIOT				
P5				Mrs Alexandra VALLET	Mrs Cécile CEULERS	Mrs GREGOIRE Marine				

23. CONTACTS

MANAGEMENT

Mr. Brian GOGGINS , Director (Uccle)	02 373 86 00
Mr. Gian Luca LONGO , Deputy Director - Berkendael site (pedagogical questions and didactic organization)	02 340 14 80
Mr. Peter SEGERS , Deputy Director Finance and Administration (Responsible for buildings, works and maintenance, badges, security, budget, administrative and accounting affairs, for the Uccle and Berkendael sites)	02 373 86 11

ADMINISTRATION

Secretariat	Mrs Florence VAN HAUWERMEIREN Mrs Katia BAHRAYENAK <i>(replacement)</i>	02 340 1480	florence.van-hauwermeiren@eursc.eu katsiaryna.bahrayenak@eursc.eu	AR.12
Nurse	Mrs Marie-France ADECHOUBOU	02 340 1482	marie-france.adechoubou@eursc.eu	AR.14
Pedagogical secretary / Enrolment	Mrs Lieke SKEET	02 340 1483	lieke.skeet@eursc.eu	AR.15
Educational Support Coordinator	Mrs Laura DE GREEF	/	laura.de-greef@edu.eursc.eu	B2.59
School psychologist	Mrs Julia LEMBERGER	/	julia.lemberger@eursc.eu	B2.59
Librarian	Mrs Sylviane SIAR-TITECA	02 340 1480	sylviane.siar-titeca@edu.eursc.eu	AR.20
Canteen Manager	Mr. Vincent KLICH	02 340 1488	euro.school.vorst@compass-group.be	

PÉRISCOLAIRE Berkendael
periscolaire.berkendael@gmail.com
+32 472 07 35 25

APEEE Services – TRANSPORT
02 340 14 85
transport.berkendael@uccleparents.org

EUROPEAN COMMISSION GARDERIE
02/297.91.59
OIB-GARDERIES-SECRETARIAT@ec.europa.eu